



Storage Systems

BATTERY STORAGE SYSTEM OUTDOOR BSO 50-88/109



- **All-in-one battery storage system for outdoor use**
- **Outdoor cabinet with protection type IP65 / IP54**
- **Easy & quick installation** – components pre-installed
- **High safety standard** – Gas & smoke sensors, fire protection system
- **Heating & cooling included**



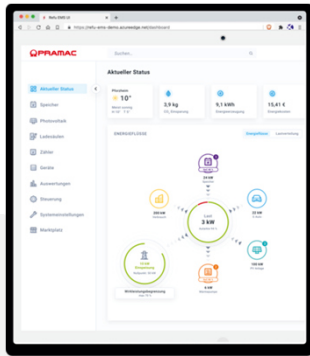
- **Commercial and Industrial Buildings** – Peak shaving, Self-consumption, Time of Use, Energy Trading
- **Buffer storage for EV fast charging** – Increasing the usable output
- **Agricultural buildings** – Use of PV electricity after end of subsidies
- **Urban storage or new buildings** – Reducing the load on the transformer



- **Pramac Storage Systems** – leading supplier of power electronics
- **Proven technology** – For a wide range of battery applications
- **Strong team** – With a global partner
- **Reliable energy storage solutions** – Indoor / Outdoor / Container



BATTERY STORAGE SYSTEM OUTDOOR BSO



TECHNICAL DATA OUTDOOR SYSTEM	BSO 50/109	BSO 88/109
-------------------------------	------------	------------

Battery data		
--------------	--	--

Total capacity (kWh)		109
Rated capacity (kWh) (90% DoD)		98
Rated voltage (Vdc)		736
Max. Charge/discharge current (A)		148
Cell type		Li-Ion (LFP) Pouch
Cycles @ 90% DoD 65% SoH 1C/1C		7.300

Battery Inverter	PBI 50K-PC	PBI 88K-PC
------------------	------------	------------

Rated power (kW)	50	88*
Rated voltage (Vac)		380 / 400 / 415
Maximum AC current (A)		128
AC grid connection		3P, PE / TN-C
Rated frequency (Hz)		50
THDi (%)		< 3
AC power factor / range		1 / 0,3i ... 0,3c
Max. Efficiency (%)		98,6
Topology		Transformerless

*Power reduction from 33 °C ambient temperature

Safety devices System		
-----------------------	--	--

Safety devices	Active devices	Permanent monitoring of the Battery cells CO sensor H ₂ sensor Smoke sensor Exhaust fan
	Passive devices	Extinguishing system with Novec 1230 Overpressure flap

BATTERY STORAGE SYSTEM OUTDOOR BSO

General data		
Operating temperature range (°C)		-20 to +50
Cooling/heating concept	Battery room	Cooling power 2 kW Heating power 1 kW
	Inverter room	Smart active cooling
Dimensions (W×D×H, mm)		1500×1108×2320
Total weight (kg) Incl. Batteries and Inverter		2.100
Protection type		IP 65 (Battery room) / IP 54 (Inverter room)
Max. permissible installation height (m)		3.000
Corrosion resistance of the housing		C3
Colour housing		RAL9016 / Pantone 382 C
Interfaces		RJ45 (Ethernet)
Certification / Approvals	Battery system	CE / UN 38.3 / UN 3481 / IEC 62619 / IEC 63056 / UL 1973 / UL 9540A / VDE 2510-50 / EN 61000-6-2 / EN 61000-6-4
	EU Directives	2014/30/EU / 2014/35/EU / 2011/65/EU
	Battery Inverter	Product Safety IEC 62109-1 / IEC 62109-2 / IEC 62116 / IEC 61727 / IEC 62477-1 / IEC 61439-1 / IEC 61439-2 /
	Grid connection conditions	DIN VDE V 0126-1-1 / VDE AR-N 4105:2018 / VDE AR-N 4110:2018 / TOR Erzeuger Typ A/B / UTE C15-712-1 VFR 2019 / C10/11 / G99 / EN 50549-1/-2
Warranty		5 years product warranty 10 years performance guarantee

All certificates are available online at www.pramac.com

BATTERY STORAGE SYSTEM OUTDOOR BSO

Pramac Smart Energy Controller (PSEC) PSEC-DMXX

Basic functions



Monitoring – visualization of energy flows & 24/7 historical data



Local & Cloud access



Operations management



Peak shaving



Self-consumption optimization



Time-of-Use

Interfaces



Local and Cloud-to-Cloud REST API

Compatible with

Charging stations

EnerCharge

Alpitronic

Energy meter

Janitza

Acrel

Carlo Gavazzi

Text and illustrations correspond to the technical status at the time of printing. We reserve the right to make technical changes. No liability for printing errors. The current version replaces all previous versions. You can find the latest version at www.pramac.com