

# MOBILE RANGE

Mobile light towers and dust suppression catalogue



# PRAMAC WHO WE ARE

Established in 1966, PRAMAC, from its headquarters in Siena (Italy), produces and sells power generation systems and material handling equipment primarily under the Pramac and Lifter by Pramac brands. In the power generation field, PRAMAC offers solutions for every kind of power supply demand: from light towers to dust suppression units, from portable to industrial power supply, both for stand by and prime power applications, with many solutions for battery energy storage; thanks to a fully integrated Made in Italy production, the company has also been developing and selling a complete range of material handling equipment.

With subsidiaries and manufacturing plants situated in Europe, Asia and South America, PRAMAC is present in more than 150 different countries and provides support for application assistance, on-site troubleshooting, maintenance and aftermarket services. In 2016 PRAMAC become part of the Generac group forming the world's third largest generator and light tower producer.



## BUSINESS AREAS

### POWER

#### Portable, residential and special products:

- Portable generators and power tools for professional use
- Portable generators and power tools for occasional use
- Gas standby generators

#### Commercial and industrial products:

- Commercial and industrial generators (Diesel/Gas)
- Generators for telecom application
- Special solutions

#### Rental solutions:

- Generators and other products for mobile application
- Battery energy storage solutions
- Light towers



### MATERIAL HANDLING EQUIPMENT

- Complete range of warehouse material handling equipment

- For the lightest duties to the most intense applications

- Pallet trucks, pallet stackers, lifting devices, customized solutions



## SERVICE, PARTS & TRAINING

The dedicated and specialist Pramac team is completely devoted to its global customers and delivering first rate technical expertise and knowledge. The group offers a full range of spare parts and components with over 6.000 parts listed, enabling the team to turnaround and process orders quickly, so all customers get the parts when needed. The committed Aftersales Team is always on hand to answer any technical questions and advise customers on the best product performance.

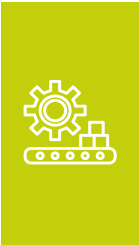
With more than 700 global service points, customers are assured that no matter where they are in the world, they have direct access from the people who made the product, providing technical and up to date advice.

The dedicated parts website allows customers to place parts orders and features several resources including access to user manuals, technical documentation, Service & Parts catalogues and maintenance programs. Visit Service & Parts today at [www.pramacparts.com](http://www.pramacparts.com)



# LIGHT TOWERS

A complete range for every need, designed by global specialists in light towers



## PRODUCTION

We are a **customer oriented** company. Our Light Tower line has been developed from feedback, ideas, and suggestions of our loyal customer base. Our **wide range of products** are the result of close working partnerships developed throughout the world with customers and suppliers, which enable us to manufacture products suited to a wide range of applications and geographies. The continued success of our products is the result of our ability to balance the best **technical performance** with unquestioned **reliability**. Professional and innovative engineering, disciplined component selection and industry leading quality control processes help the company maintain its presence as an **international market leader**. It is not surprising that our light towers have become the reference point for customers looking for a complete, reliable solution.



## INNOVATION

Significant investments into **research** and **development** continue to produce highly innovative products, with a feature set that cannot be matched by any competitor in the industry. From this commitment, we have been able to create the market for light towers in many instances.



## SUSTAINABILITY

During product design and production, we aim to create products with extremely **low fuel consumption** and **low carbon emissions**. Our machines are designed to be easily transported, optimizing space and logistics which **minimizes overall transportation** and **fuel costs**. We have also developed a darkness sensor that automatically turns the machine on and off. The widespread use of **LED lamps** and **small engines** is also a great example of sustainable endeavors available to the market.

# LPV

WE CARE



The ultimate in ecology, in compact dimensions and easily transportable. The new LPV light tower, powered by three solar panels, guarantees great brightness performance and battery life. An easy control panel and the possibility of connecting to an external power source for recharging even in the absence of sunshine, make this light tower a product of simple use and great flexibility.



## APPLICATIONS



CONSTRUCTION



MINING



LPV-A 1500m<sup>2</sup>  
LPV-B 2100 m<sup>2</sup>



## TECHNICAL DATA

		LPV-A	LPV-B
<b>Minimum dimensions (mm)</b>	Lenght x Width x Height	2983 x 1386 x 2474	2983 x 1386 x 2474
<b>Maximum dimensions (mm)</b>	Lenght x Width x Height	3514 x 3059 x 6500	3514 x 3059 x 6500
<b>Dry weight (kg)</b>		1000	1000
<b>Lifting system</b>	M:Manual / H:Hydraulic	M	M
<b>Mast rotation (°)</b>		340	340
<b>Lamps type</b>		4x65W LED	4x100W LED
<b>Total lumen (Lm)</b>		29000	60000
<b>Illuminated area (m<sup>2</sup>)</b>		1500	2100
<b>AGM batteries (Ah)</b>		8 x 230	8 x 230
<b>Avg. sound pressure</b>	dB(A) @ 7m	0	0
<b>Wind speed resistance (km/h)</b>		80	80
<b>Total running time (h)</b>		16	10
<b>Quantity per container</b>		8	8
<b>Optional accessories</b>		Road Trailer	Road Trailer

# CLT-Q4

WE CARE



One of the most innovative and revolutionary models in our range! This mobile light tower can be powered by an external power source like a power generator, the mains or another light tower with built-in generator. Up to three units can also be connected in series, obtaining different points of lights from only one power source.



## APPLICATIONS



CONSTRUCTION



INDUSTRIAL



2800m<sup>2</sup>

## TECHNICAL DATA

		CLT-Q4 - LED
Minimum dimensions (mm)	Lenght x Width x Height	1230 x 780 x 2180
Maximum dimensions (mm)	Lenght x Width x Height	1870 x 1460 x 6700
Dry weight (kg)		250
Lifting system	M:Manual / H:Hydraulic	M
Mast rotation (°)		340
Lamps type		4x240W LED
Total lumen (Lm)		139200
Illuminated area (m <sup>2</sup> )		2800
Inlet plug	A/V/Hz	16/220/50 - 16/240/60
Outlet Socket	A/V/Hz	16/220/50 - 16/240/60
Wind speed resistance (km/h)		80
Quantity per container		33
Optional accessories		Darkness sensor

# MLT2

One of the smallest mobile light towers in the range, the MLT2 is equipped with 4x240W high efficiency LED floodlights and a built-in generating set available in different versions. This model is equipped with hand trolley for easy transportation.



## APPLICATIONS



CONSTRUCTION



INDUSTRIAL



RENTAL



2500m<sup>2</sup>

## TECHNICAL DATA

		MLT2 P	MLT2 Y	MLT2 PX	MLT2 Empty
<b>Minimum dimensions (mm)</b>	Lenght x Width x Height	1250 x 1060 x 1890	1250 x 1060 x 1890	1250 x 1060 x 1890	1250 x 1060 x 1890
<b>Maximum dimensions (mm)</b>	Lenght x Width x Height	1460 x 1400 x 5200	1460 x 1400 x 5200	1460 x 1400 x 5200	1460 x 1400 x 5200
<b>Dry weight (kg)</b>		265	315	295	216
<b>Lifting system</b>	M:Manual / H:Hydraulic	M	M	M	M
<b>Mast rotation (°)</b>		0	0	0	0
<b>Lamps type</b>		4x240W LED	4x240W LED	4x240W LED	4x240W LED
<b>Total lumen (Lm)</b>		139200	139200	139200	139200
<b>Illuminated area (m<sup>2</sup>)</b>		2500	2500	2500	2500
<b>Engine</b>		Pramac LC170F-3	Yanmar L70N	Pramac SR188F	-
<b>Engine cooling</b>	L: Liquid / A: Air	A	A	A	-
<b>Cylinders (q.ty)</b>		1	1	1	-
<b>Engine speed (RPM)</b>	50 Hz	3000	3000	3000	-
<b>Liquid containment (110%)</b>	√:Yes / •:No	•	•	•	-
<b>Alternator</b>	kVA/V/Hz LTP	3.3/220/50*	4.1/220/50*	4.2/220/50*	-
<b>CEE Outlet Socket</b>	A/V/Hz	n.a.	32/220/50*	16/220/50*	-
<b>Schuko Outlet Socket</b>	A/V/Hz	16/220/50*	16/220/50*	16/220/50*	-
<b>Avg. sound pressure</b>	dB(A) @ 7m	66	68	69	-
<b>Wind speed resistance (km/h)</b>		80	80	80	80
<b>Tank capacity (liters)</b>		9	18	27	-
<b>Total running time (h)</b>		6	16	19	-
<b>Quantity per container</b>		25	25	25	25

\* Please check 60 Hz version availability with local dealer or subsidiary.

# LSW8

The compact footprint and ease of use are two main features that make this light tower one of the top models in the range. High performance balanced with low cost have made the LSW8 become one of the best-seller models in the Pramc range.

## APPLICATIONS



CONSTRUCTION



MINING



RENTAL



4200m<sup>2</sup>



## TECHNICAL DATA

		LSW8 - MH
Minimum dimensions (mm)	Lenght x Width x Height	2650 x 1300 x 2460
Maximum dimensions (mm)	Lenght x Width x Height	2650 x 2460 x 8000
Dry weight (kg)		719
Lifting system	M:Manual / H:Hydraulic	M
Mast rotation (°)		340
Lamps type		4x1000W Metal Halide
Total lumen (Lm)		360000
Illuminated area (m <sup>2</sup> )		4200
Engine		Kubota D1105
Engine cooling	L: Liquid / A: Air	L
Cylinders (q.ty)		3
Engine speed (RPM)	50 / 60 Hz	1500 / 1800
Liquid containment (110%)	√:Yes / •:No	•
Alternator	kVA/V/Hz	8/220/50 - 8/240/60
Outlet Socket	kVA/V/Hz	3/220/50 - 3/240/60
Avg. sound pressure	dB(A) @ 7m	68
Wind speed resistance (km/h)		110
Tank capacity (liters)		75
Total running time (h)		44
Quantity per container		14
Optional accessories		Electric Winch, Certified Spark Arrestor

# LSW3

The lighting power of high-efficiency LED floodlights meets a very narrow canopy design, evolving the new LSW3 into the most compact and eco-friendly light tower ever created! LSW3 will help you to skimp up to 75% of fuel and protect our environment with a reduction in carbon emissions up to 10 Ton per year, compared to a traditional light tower with metal halide lamps.

## APPLICATIONS



CONSTRUCTION



MINING



RENTAL



4500m<sup>2</sup>



## TECHNICAL DATA

		LSW3		
<b>Minimum dimensions (mm)</b>	Lenght x Width x Height	2480 x 1190 x 2450		
<b>Maximum dimensions (mm)</b>	Lenght x Width x Height	2480 x 2400 x 8000		
<b>Dry weight (kg)</b>		650		
<b>Lifting system</b>	M:Manual / H:Hydraulic	M		
<b>Mast rotation (°)</b>		340		
<b>Lamps type</b>		4x320W LED		
<b>Total lumen (Lm)</b>		188000		
<b>Illuminated area (m<sup>2</sup>)</b>		4500		
<b>Engine models available</b>		Yanmar L70N*	Yanmar 2TNV70	Kubota Z482
<b>Engine cooling</b>	L: Liquid / A: Air	A	L	L
<b>Cylinders (q.ty)</b>		1	2	2
<b>Engine speed (RPM)</b>	50 / 60 Hz	3000 / 3600	1500 / 1800	1500 / 1800
<b>Liquid containment (110%)</b>	√:Yes / •:No	√		
<b>Alternator</b>	kVA/V/Hz	3.5/220/50 - 4.5/240/60		
<b>Outlet Socket</b>	kVA/V/Hz	2/220/50 - 2/240/60		
<b>Avg. sound pressure</b>	dB(A) @ 7m	66	59	59
<b>Wind speed resistance (km/h)</b>		80		
<b>Tank capacity (liters)</b>		120		
<b>Total running time (h)</b>		200	171	171
<b>Quantity per container</b>		22		
<b>Optional accessories</b>		Darkness sensor		

\*Not globally available. Please check with local dealer or subsidiary.



# LQW5

LQW5 is a versatile solution thanks to its robust configuration and the low noise level, making this light tower suitable for a wide range of application fields: from events to construction sites. The compact design of LQW5 also guarantees an easier transportation on trucks.



## APPLICATIONS



CONSTRUCTION ENTERTAINMENT RENTAL



4500m<sup>2</sup>

## TECHNICAL DATA

		LQW5
Minimum dimensions (mm)	Lenght x Width x Height	1220 x 1150 x 2300
Maximum dimensions (mm)	Lenght x Width x Height	1790 x 1740 x 8400
Dry weight (kg)		1070
Lifting system	M:Manual / H:Hydraulic	H
Mast rotation (°)		340
Lamps type		4x320W LED
Total lumen (Lm)		188000
Illuminated area (m <sup>2</sup> )		4500
Engine		Yanmar 2TNV70
Engine cooling	L: Liquid / A: Air	L
Cylinders (q.ty)		2
Engine speed (RPM)	50 / 60 Hz	1500 / 1800
Liquid containment (110%)	√:Yes / •:No	√
Alternator	kVA/V/Hz	5/220/50 - 5/240/60
Outlet Socket	A/V/Hz	2.5/220/50 - 2.5/240/60
Inlet plug	dB(A) @ 7m	16/220/50 - 16/240/60
Avg. sound pressure		58
Wind speed resistance (km/h)		110
Tank capacity (liters)		170
Total running time (h)		243
Quantity per container		18
Optional accessories		Darkness sensor

# DUST SUPPRESSION UNITS

The Dust Suppression range is composed of three models which offer different levels of coverage and performance covered by the nebulized water mist. This units are suitable for a variety of applications such as demolition works, mining sites, waste dumps, aggregate production or recycling, environmental repairs and much more.

**DSU** | **75**  
**150**  
**200**



## PRODUCTION

The Dust Suppression line has originally been designed for suppressing dust during demolition works. The product range grows up soon until covering a lot of new application fields, such as mining sector, waste dumps, indoor demolition jobs, and environmental repairs.

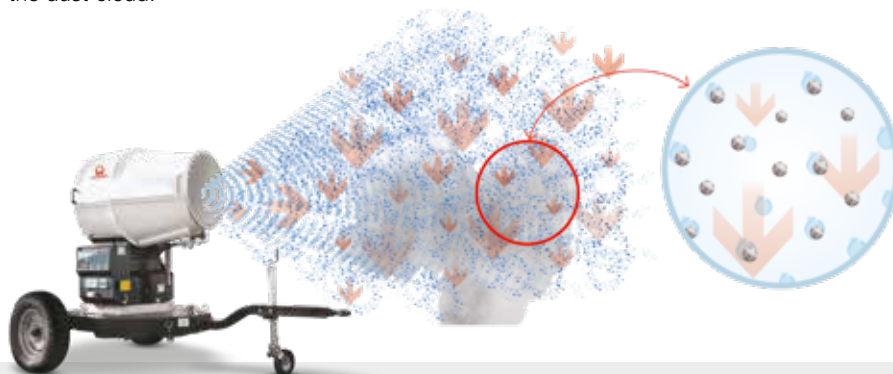


## INNOVATION

Using an obsolete dust suppression system through a water hose, it was only possible to obtain water particles with a 1000 micron average diameter: these particles were not able to catch dust particles that have a 80 micron diameter instead. Moreover, the water flow passes through the dust cloud without covering it completely.

Today, using one of our Dust Suppression units, the nebulized water particles have a 50-150 micron diameter: they can easily combine themselves with dust particles with same dimensions and drag them to the ground. Moreover, nebulized water can completely cover the dust cloud.

## HOW IT WORKS



## MAIN FEATURES

- Reduced water consumption compared to traditional techniques
- Dust suppression more effective thanks to the nebulized water
- Automatic operation
- No formation of muddy surfaces
- Coverage across large working areas thanks to the rotation system

## MAIN APPLICATIONS



DEMOLITION



QUARRIES



WASTE DUMPS

Also ideal for: concrete and aggregates production and recycling, environmental repairs, steel and slag treatment landfills, wood and aluminum processing.

## STANDARD EQUIPMENT

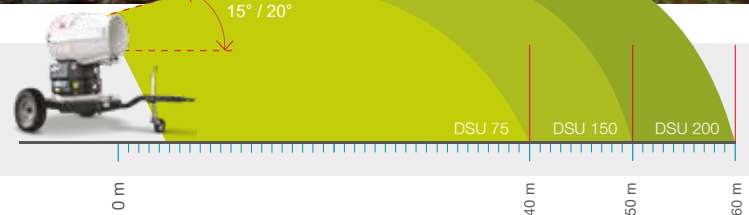
- INTEGRATED CONTROL PANEL
- PHASE INVERTER
- PUMP WITH PERIPHERAL IMPELLER
- FLOWMETER FOR PUMP PROTECTION
- PRESSURE GAUGE FOR OUTLET PRESSURE
- SPACING CONTROL PANEL

## OPTIONS

- REMOTE CONTROL
- HOMOLOGATED ADJUSTABLE ROAD TRAILER
- DOCUMENTS FOR ROAD REGISTRATION (EU)
- AUTOMATIC ROTATION SYSTEM
- ELECTRIC TILTING
- DOSING PUMP FOR CHEMICAL ADDITIVES
- WATER SUPPLY PUMP
- ARCTIC KIT
- SIDE FORKLIFT POCKETS (FOR LOW SPEED TRAILER ONLY)
- DEDICATED COLOUR (RAL) (FOR SPRAY CANNON ONLY)
- BALL OR EYELET HITCH



### MAXIMUM HORIZONTAL RANGE



## TECHNICAL DATA

		DSU 75	DSU 150	DSU 200
Electrical engine power (kW)		7.5	15	20
Smaller generator required		Three-phase - 20 kW	Three-phase - 35 kW	Three-phase - 50 kW
Max. horizontal range (m)	Without wind	30 - 40	40 - 50	50 - 60
Max. vertical range (m)	Without wind	16	20	24
Max. covered area (m <sup>2</sup> )	With rotation on	4800	7190	10355
Electrical connection	Inlet plug	Three-phase - 32 A	Three-phase - 32 A	Three-phase - 63 A
Water connection	Available plugs	UNI 45 / STORZ / CAMLOCK	UNI 45 / STORZ / CAMLOCK	UNI 45 / STORZ / CAMLOCK
Min. inlet pressure (bar)		1	1	1
Water consumption (L/min)		52	60	70
Water inlet filter (µm)		180	180	180
Working angle (°)		335	335	335
Tilting angle (°)		0 - 40	0 - 40	0 - 40
Dimensions (mm)	Length x Width x Height	3300 x 1830 x 2180	3300 x 1830 x 2180	3300 x 1830 x 2180
Weight (kg)		760	810	850
Quantity per container		8	8	8

Distributed by



**WE ARE THE ENERGY GENERATION!**

**[www.pramac.com](http://www.pramac.com) | [www.pramacparts.com](http://www.pramacparts.com)**

The product images shown are for illustration purposes only and may not be an exact representation of the product. The manufacturer reserves the right to introduce changes to models and features without prior notice.  
EN/02\_2022\_rev.2

